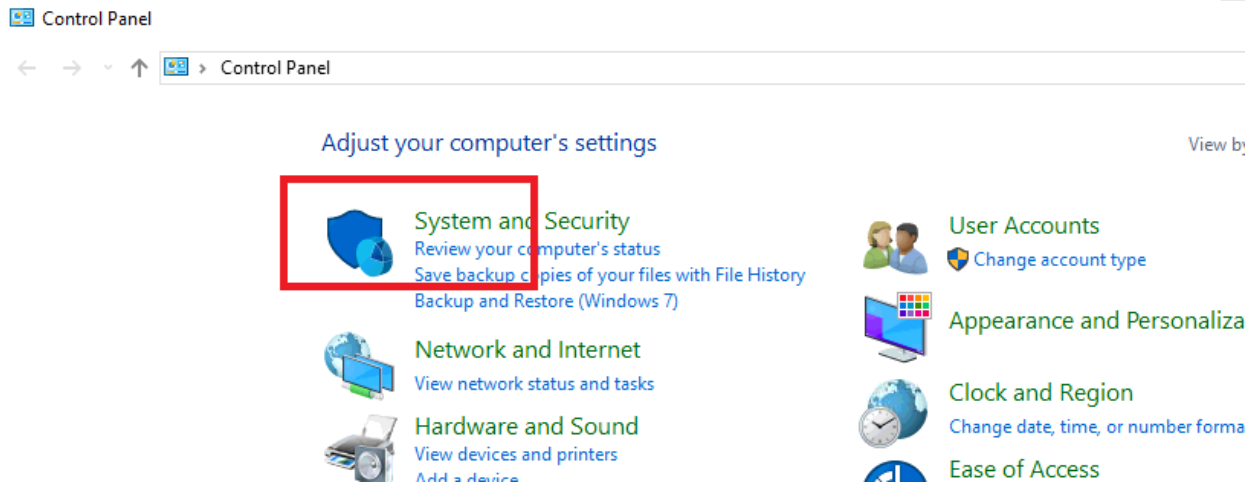


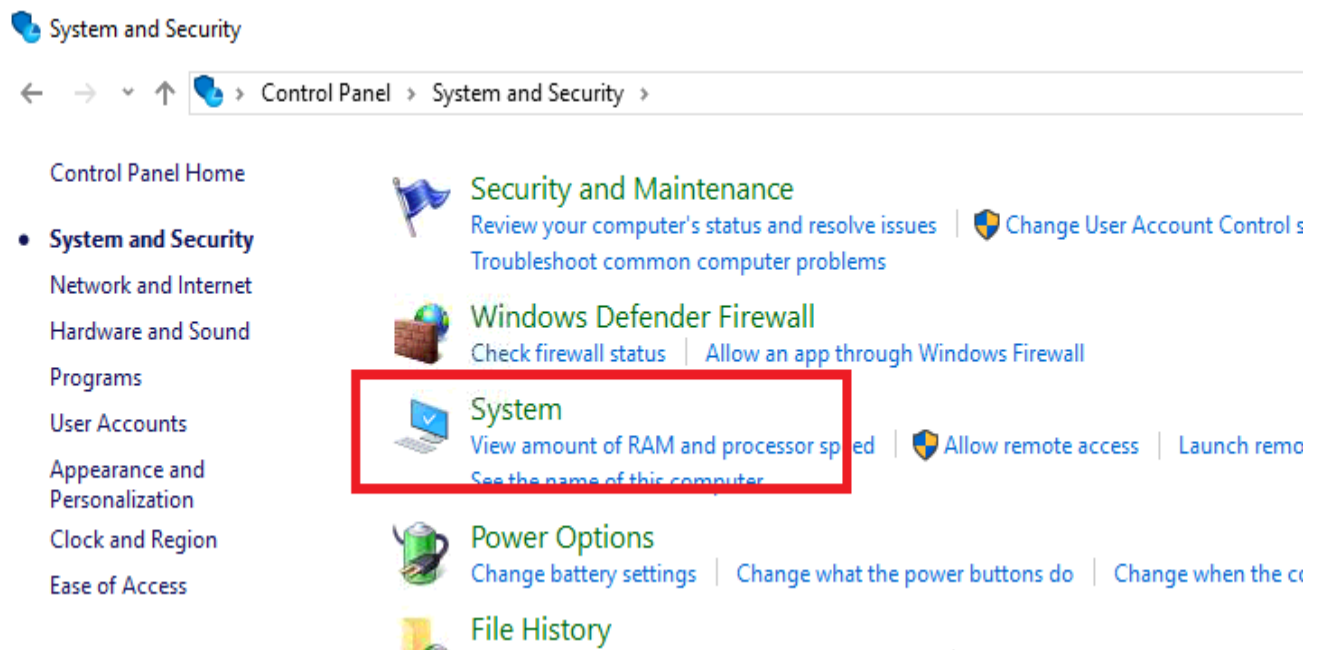
The Windows 10 has a problem – it can't set path properly from ChimericSeq, so ChimericSeq can't find the needed tool perl and Python.

To fix this issue, you close the ChimericSeq application first (if it is open) and then change the system variable "Path" to include locations for Perl & Python. The detail steps are listed below:

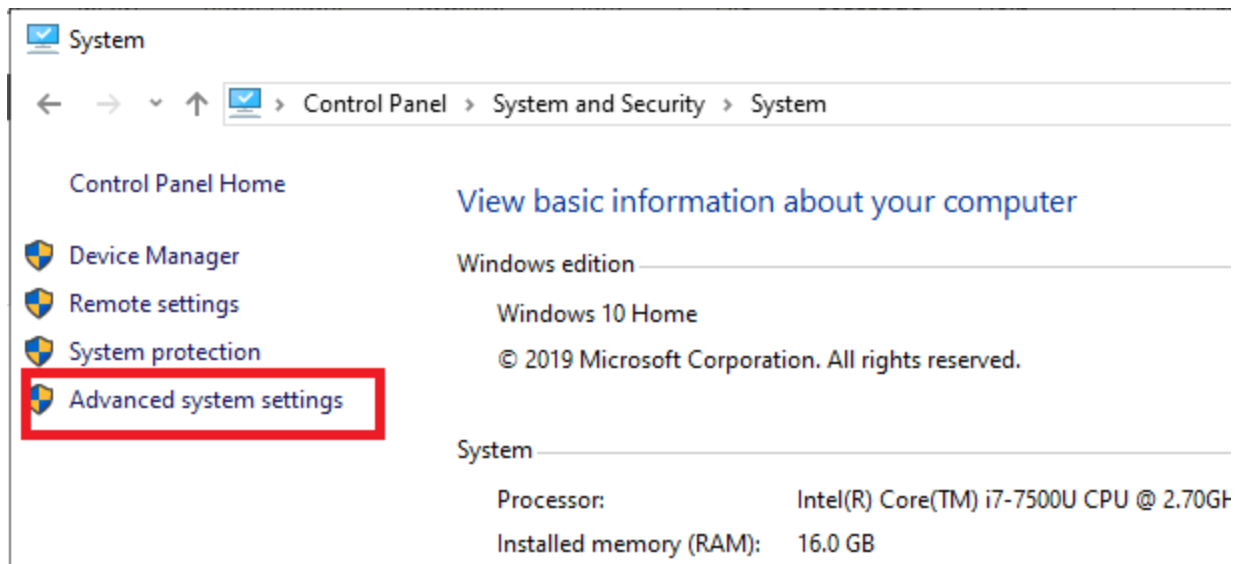
1. Open "Control Panel" and select "System and Security"



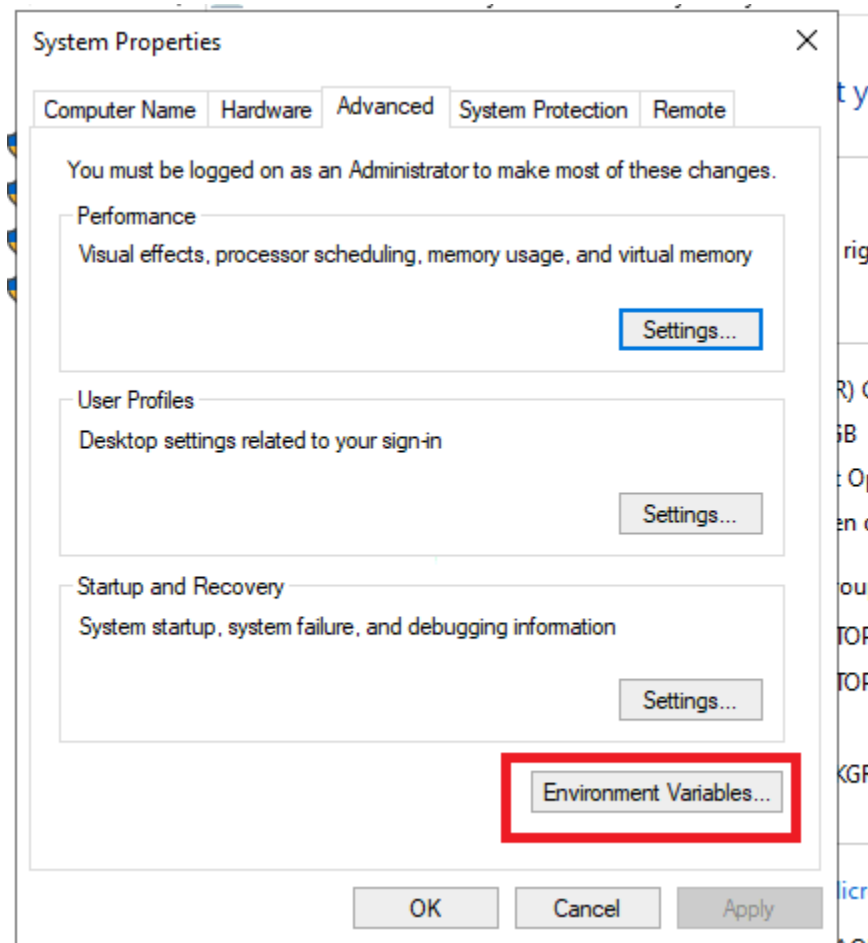
2. Select "System"



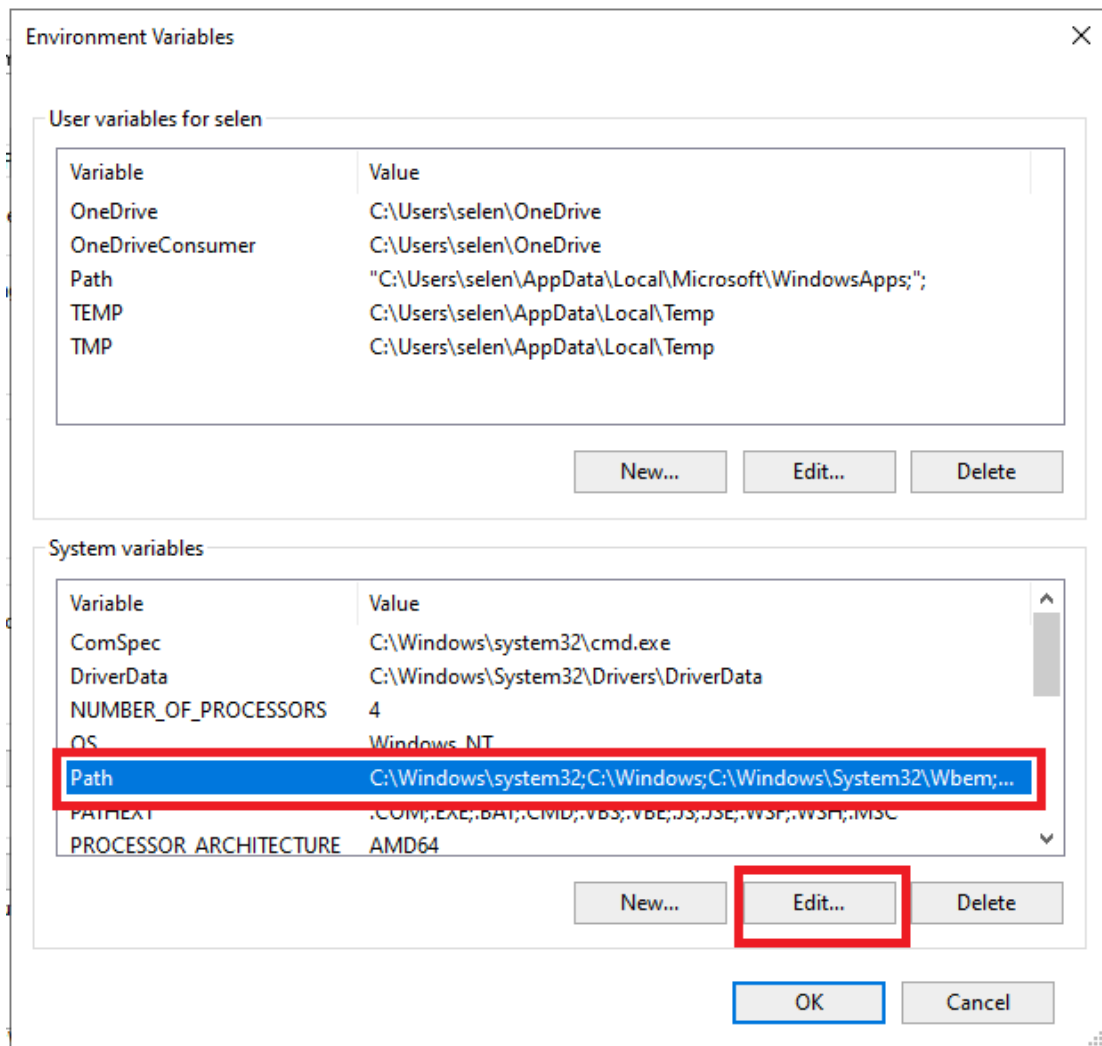
3. In system, select "Advanced system settings"



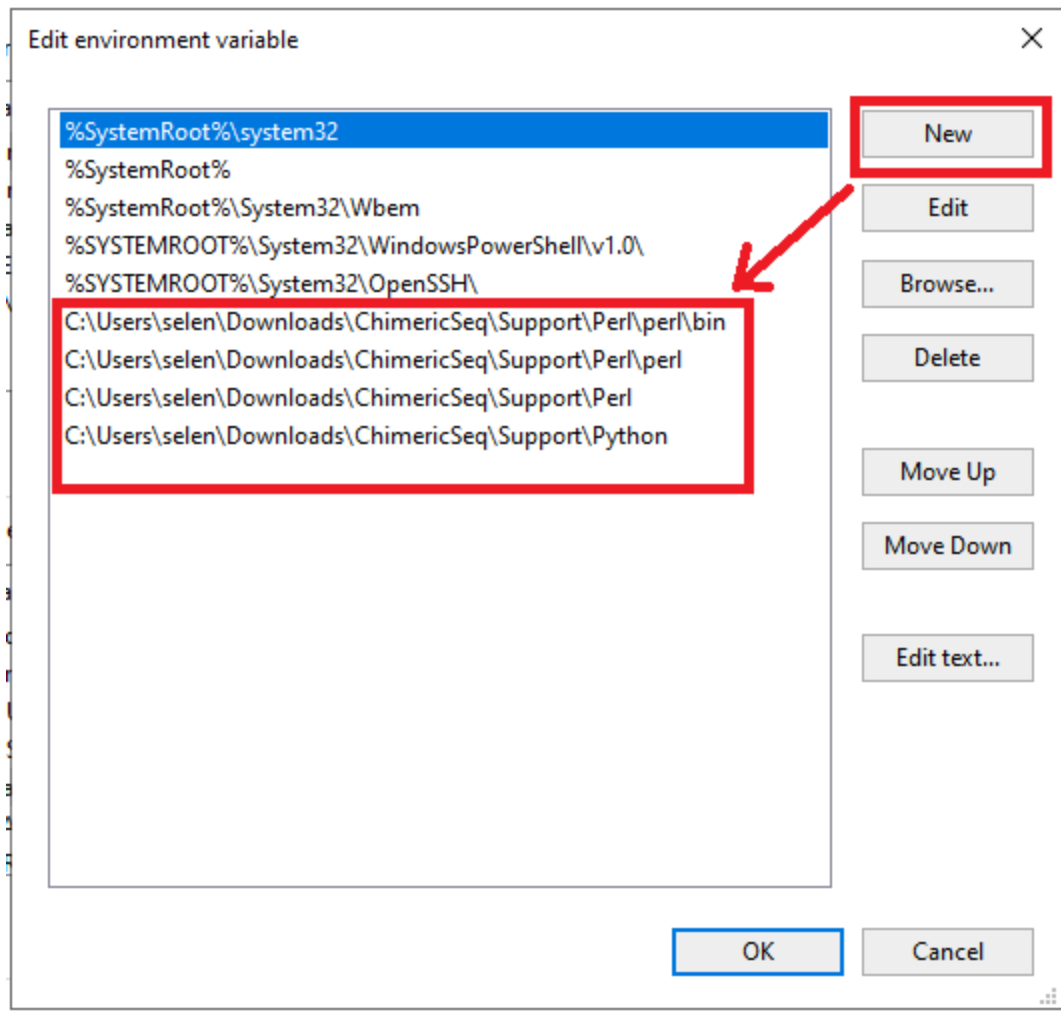
4. Select "Environment Variables"



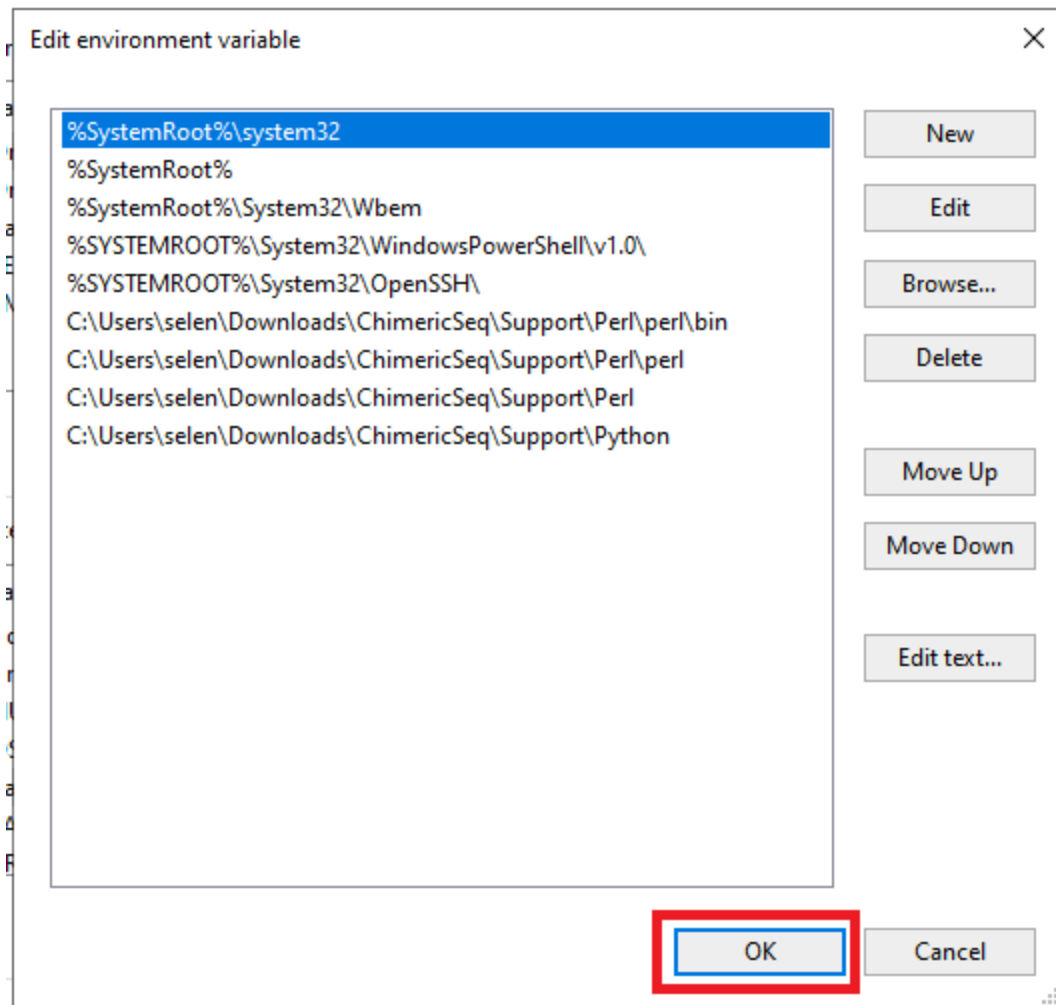
5. Pick the system variable "Path" and select "Edit"



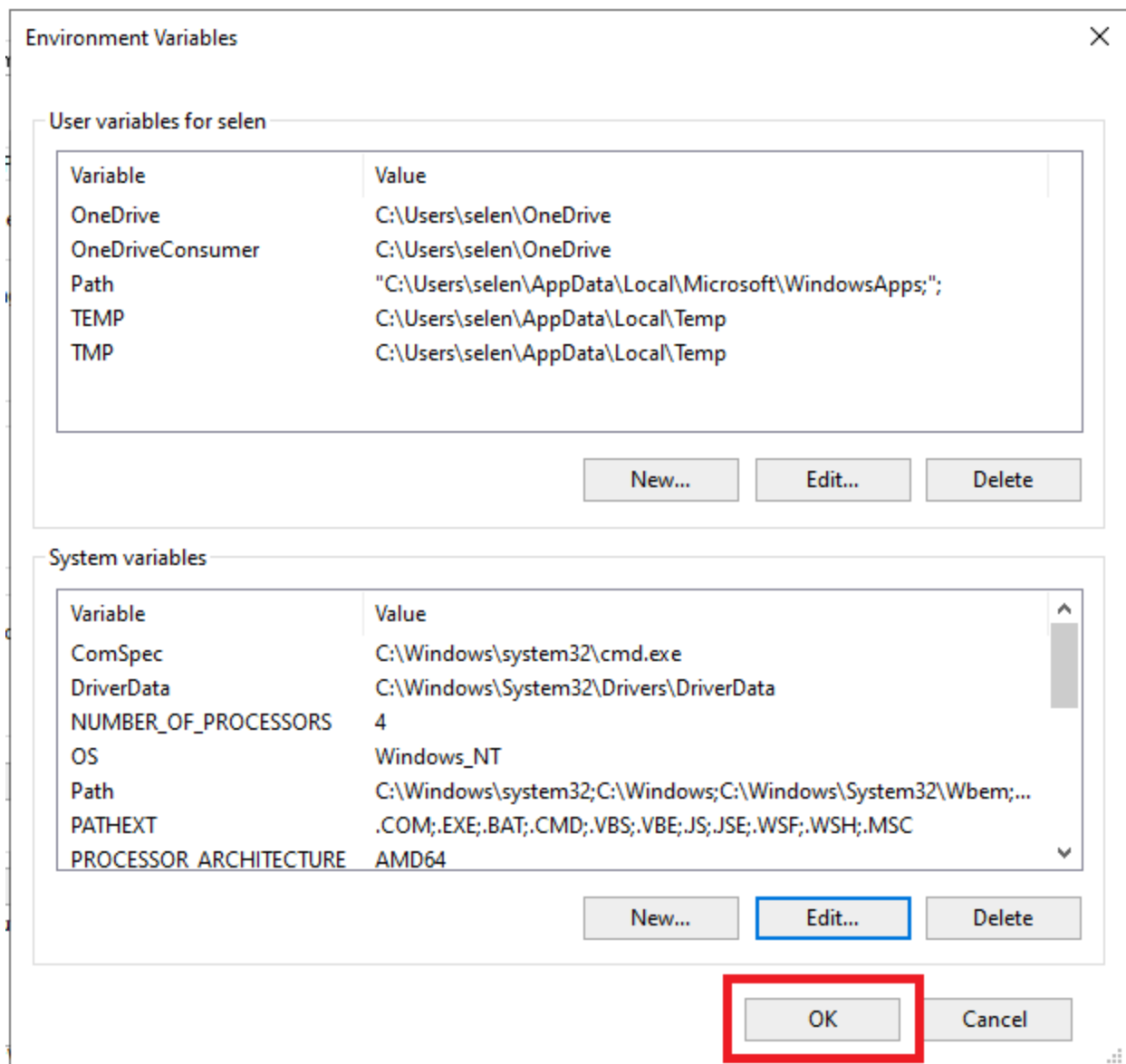
6. Select "New" and add 4 entries. The entry path will depend on where you install the ChimericSeq.



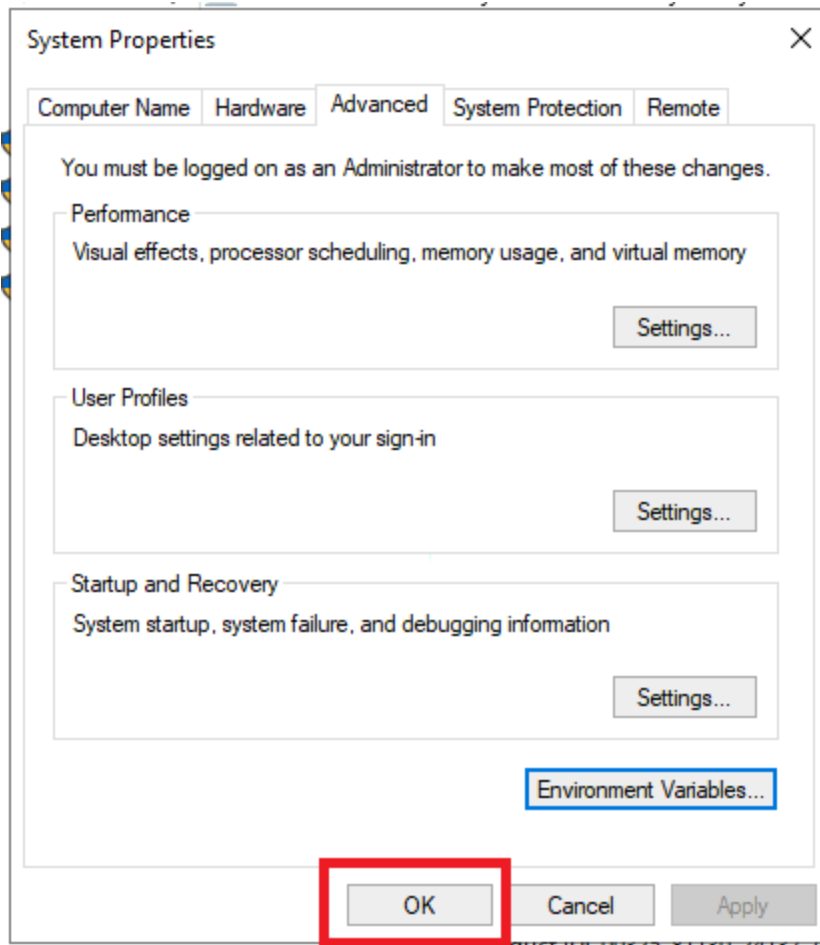
7. Select "Ok" to save and exit



8. Select "Ok" to exit "Environment Variables"

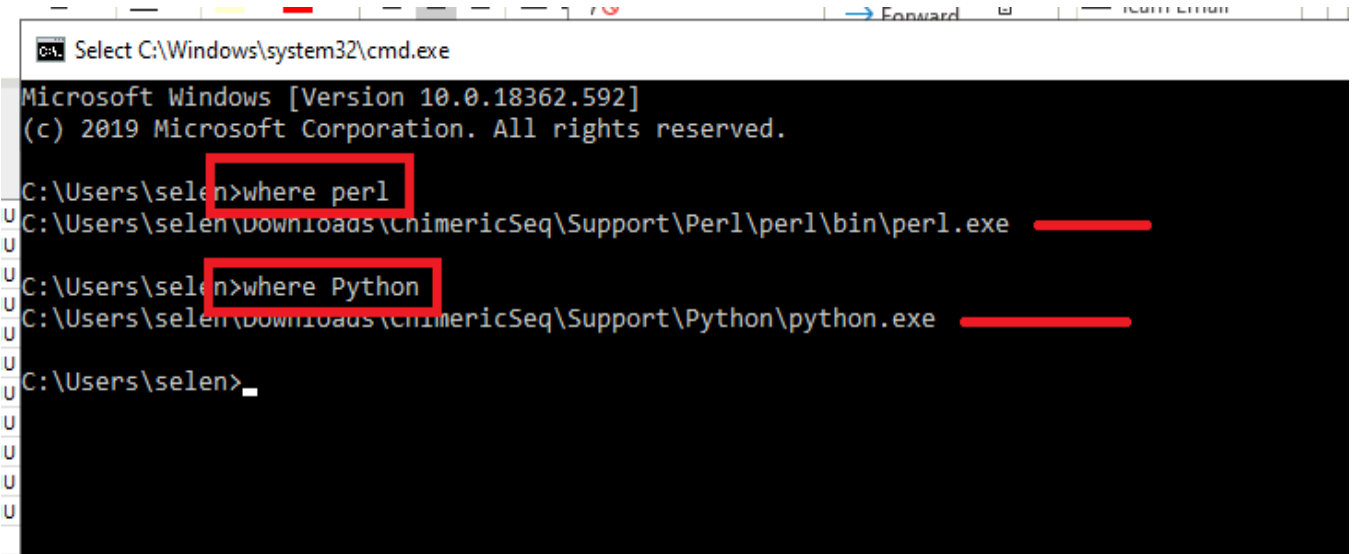


9. Select "Ok" to complete the system variable "Path" change.



10. Restart your computer.

11. To verify, run a command window and type “where perl” and “where Python” and it should show where are the locations for those 2 tools installed.



12. Open the ChimericSeq application and you should be able to build the reference files.