

JPurX-S200 Nucleic Acid Purification System

An automated nucleic acid extraction solution from plasma or urine using JBS technology

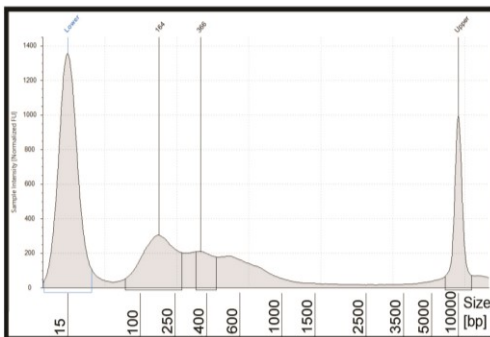


Standalone System with
Graphical Interface

- Flexible sample input volume
- High DNA quality and purity ready for qPCR/NGS
- Minimal genomic DNA contamination
- Cost effective
- Minimal hands-on time
- Exceptional reproducibility
- Clog-free
- Process up to 24 samples at a time
- Minimal risk of cross-contamination

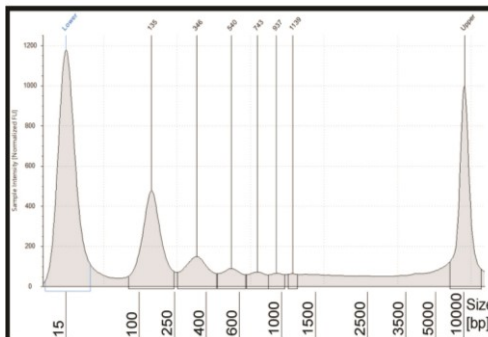
DNA size profiles analyzed on TapeStation 4200.

Urine DNA



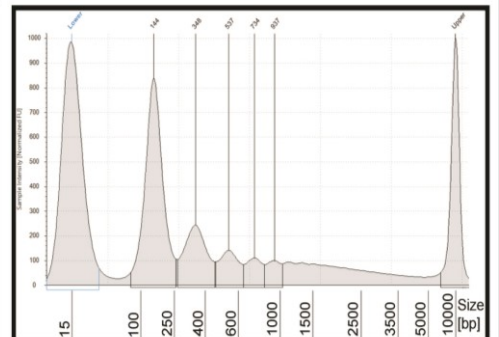
DNA input equivalent from 0.72mL of Urine

Plasma DNA



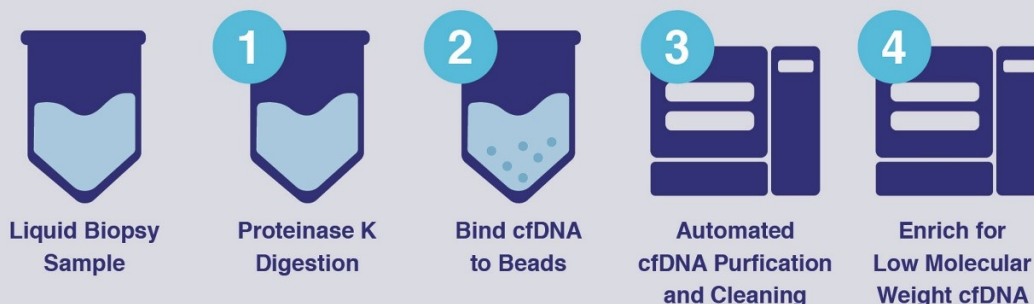
DNA input equivalent from 0.08mL of Plasma

Enriched Plasma cfDNA



DNA input equivalent from 0.08mL of Plasma

Easy Steps to Purified cfDNA



| System Specifications | |
|--|--|
| Extraction Method Magnetic Beads Extraction Technology | Automated Throughput 1 to 24 Samples per Run |
| Extraction Steps Proteinase K Digestion, Binding, Automated Purification | Display LCD Display <i>No computer required</i> |
| Dimensions 56 x 51 x 59 cm | Operating Temperature 15 - 30°C |
| Weight 55kg | Electrical Requirements 110-240V 50/60Hz |



1 to 24 Samples per Run

| Catalog # | Product Name | Quantity |
|---|--|-----------------------|
| JBS-08875 | JBS Total Urine DNA Extraction Kit | 24, 48, or 96 samples |
| JBS-08874 | JBS Total Plasma DNA Extraction Kit | 24, 48, or 96 samples |
| JBS-08871 | JBS Low-Molecular Weight Fractionation Kit | 24, 48, or 96 samples |
| JBS-08870 | JBS RNA Extraction Kit | 24, 48, or 96 samples |
| Instrument | | |
| JPurX-S200 (Model A: 12 Samples; Model B: 24 Samples) | | |

ORDERING INFORMATION

For inquiries and ordering, please contact us by Email (info@jbs-science.com)
New Kit items will be updated at <http://www.jbs-science.com/products.php>

JBS Science, Inc.
3805 Old Easton Rd
Doylestown, PA, 18902 USA
www.jbs-science.com